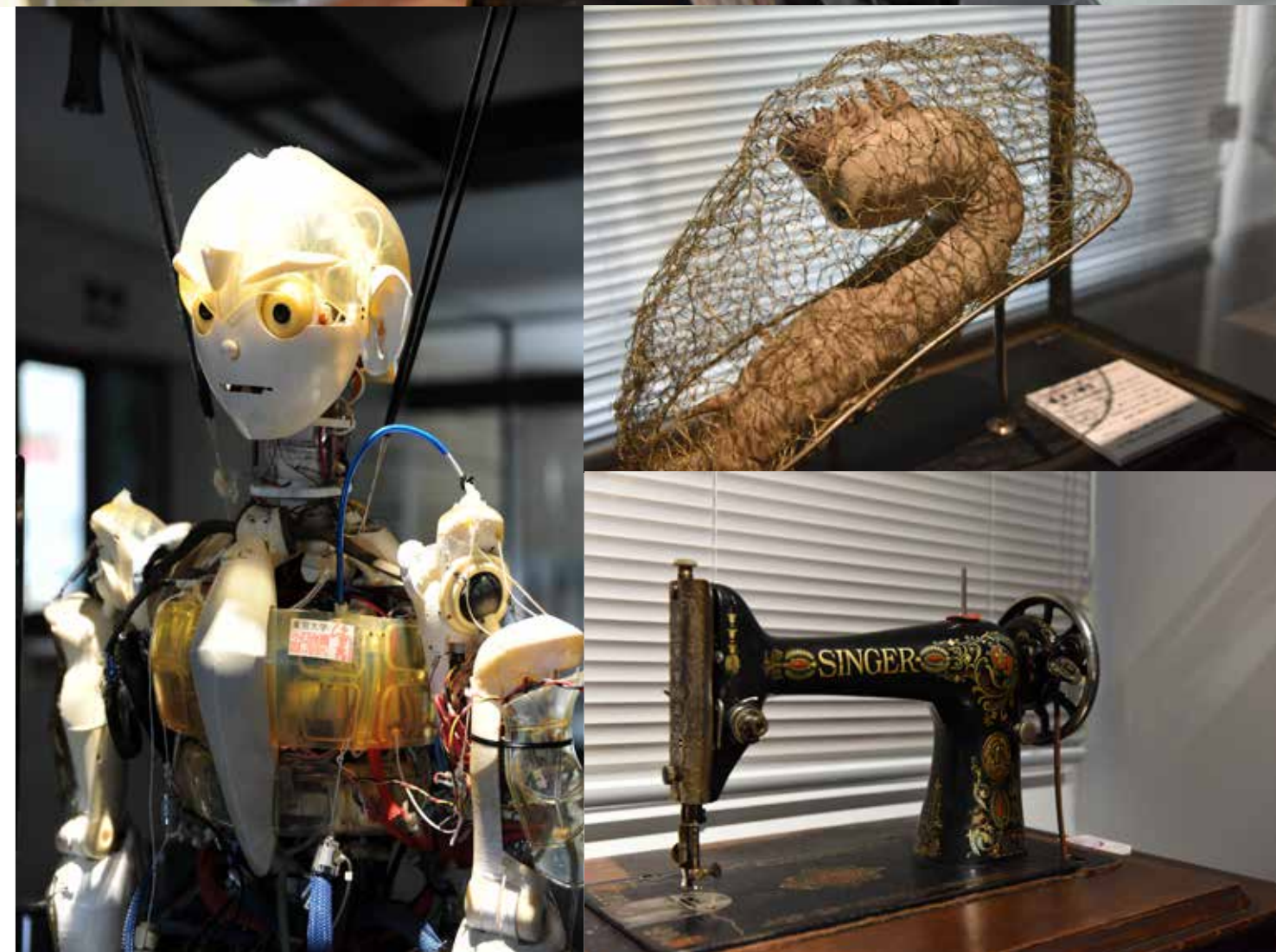


WELCOME TO NATURE AND SCIENCE MUSEUM



OPENING HOURS, CLOSURES, AND ADMISSION

MUSEUM HOURS

Tuesday - Saturday 10:00-17:00 (Admission is until 16:00)

CLOSED

Sundays, Mondays, Holidays, 31 May and summer/winter holidays

ADMISSION

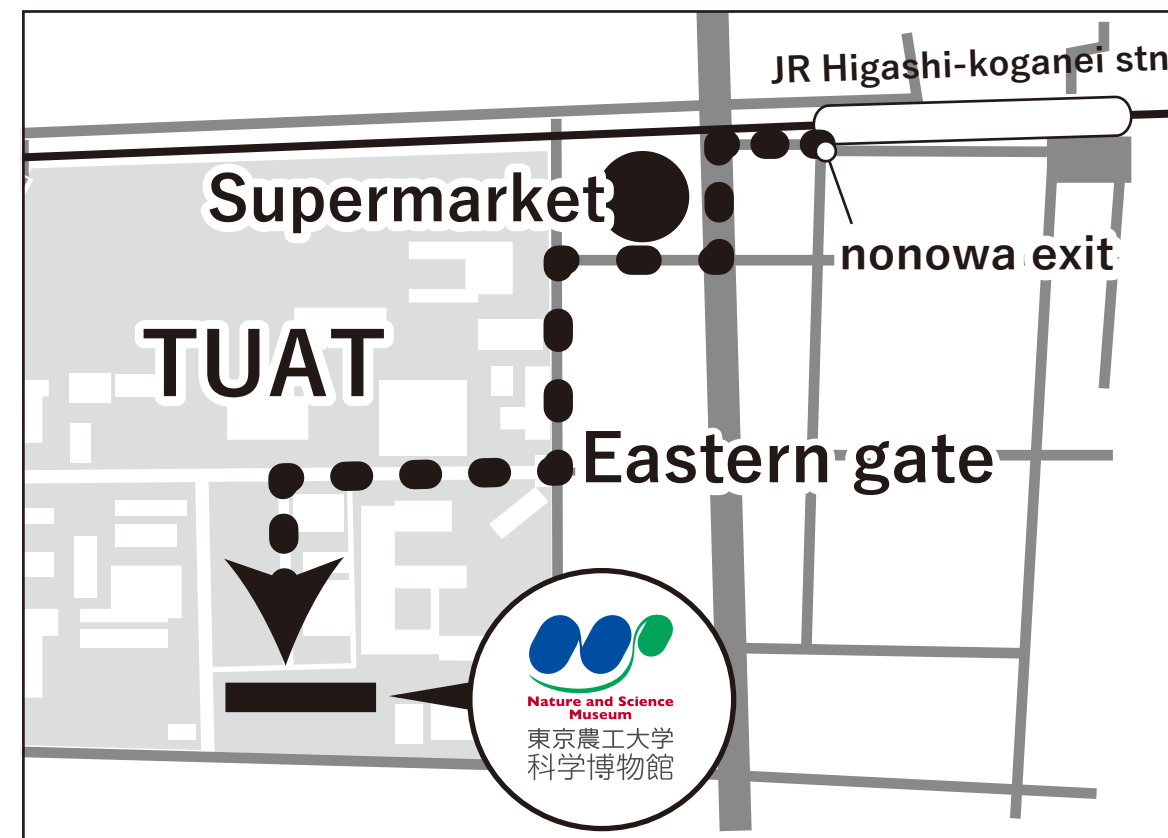
Free

GROUP TOURS

Please contact the museum office in advance

DIRECTION

A 10-minute walk from the nonowa Exit of Higashikoganei Station (JR Chuo Line). Take the CoCo Bus (Naka-cho route) from the South Exit of Musashikoganei Station (JR Chuo Line) and get off at Nokodai-mae, which is near the Main gate.



2-24-16 Naka-cho, Koganei, Tokyo, 184-8588, JAPAN
TEL +81-42-388-7163 FAX +81-42-388-7598
E-mail kahaku@cc.tuat.ac.jp
Website <http://web.tuat.ac.jp/~museum>



**Nature and Science
Museum**

東京農工大学
科学博物館



A museum you can enjoy learning nature and science through exhibits on sericulture, textile technology and advanced research of the Tokyo University of Agriculture and Technology.

From Sericulture, Textile Technology and Machinery, to Advanced Science and Technology

History of this museum dates back to 1886 (the 19th year of Meiji) when Ministry of Agriculture and Commerce established Research Laboratory of Silkworm Diseases. It had a display room for silk-related samples and objects. Raw silk at that time was the biggest export item in value of Japan and to promote and develop sericulture was in the center of Japan’ s industrial policy. The laboratory later grew to Tokyo High School of Sericulture, then Tokyo Textile Technical School and now Tokyo University of Agriculture and Technology(TUAT).

TUAT and its predecessor have contributed greatly to research, development and education in sericulture, textile industry and many areas of science, technology and engineering. In addition, a collection of samples, objects and machinery used for research and education from the beginning are preserved. They are now on display at this museum.



1F TUAT : now

The undergraduate school of University consists of five agricultural departments and eight technological departments. For easy-to-understand communication with the visiting general public, each department introduces itself by illustrating curriculum and latest research results. And occasionally the museum holds exhibition on important research theme and interesting topic.

FOOTPRINTS OF INVENTION

Textile machinery for silk reeling, cotton spinning, knitting and weaving are on display. Visitors can follow the footprints of technological innovation, for example, from hand looms to jet looms. Some of the machines are well maintained and regularly operated. Visitors must see raw silk, cotton yarn or fabric coming out from these machines.

2F TUAT : history

History of the university is displayed in a chronological table with many historical objects. A room is dedicated to praise Honorary Professor Akira Endo for his achievements in pharmacy(pharmacology). Visitors also appreciate a collection of sericulture-related woodblock prints of the 18th and the 19th century and of silk trademarks of silk reeling factories. Other exhibits include various historical materials, tools, equipment and machinery relating to sericulture and textile technology.



Nissan type HR automatic silk reeling machine



Toyota type G automatic loom



The world’s first man-made fiber(Chardonnet rayon)

EXHIBITIONS



A model of silkworm in disease



Medicine capsules of Compactin developed by Akira Endo